

Every cloud

...has a silver lining



presented by
alan benson & edmund j sutcliffe



Data Centre

...today's pressures





Data growth 40-70% per year



Three stylized, dark teal clouds with white outlines are positioned at the top of the slide. The largest cloud is in the center, with two smaller ones on either side.

Provisioning applications can
take up to 3-6 months

The logo for 'hive' is a white, rounded hexagon with the word 'hive' written in a lowercase, sans-serif font inside it.

hive



Low system utilization raises
Power & Cooling to 25-30% of budget



A stylized illustration of a tall, white skyscraper with a grid pattern on its facade, situated on a dark green hill. The background is a teal sky with several dark green, rounded clouds. The overall style is flat and modern.

**Where time
is spent**

hive



23% Delivering new capabilities

77% Keeping the light on

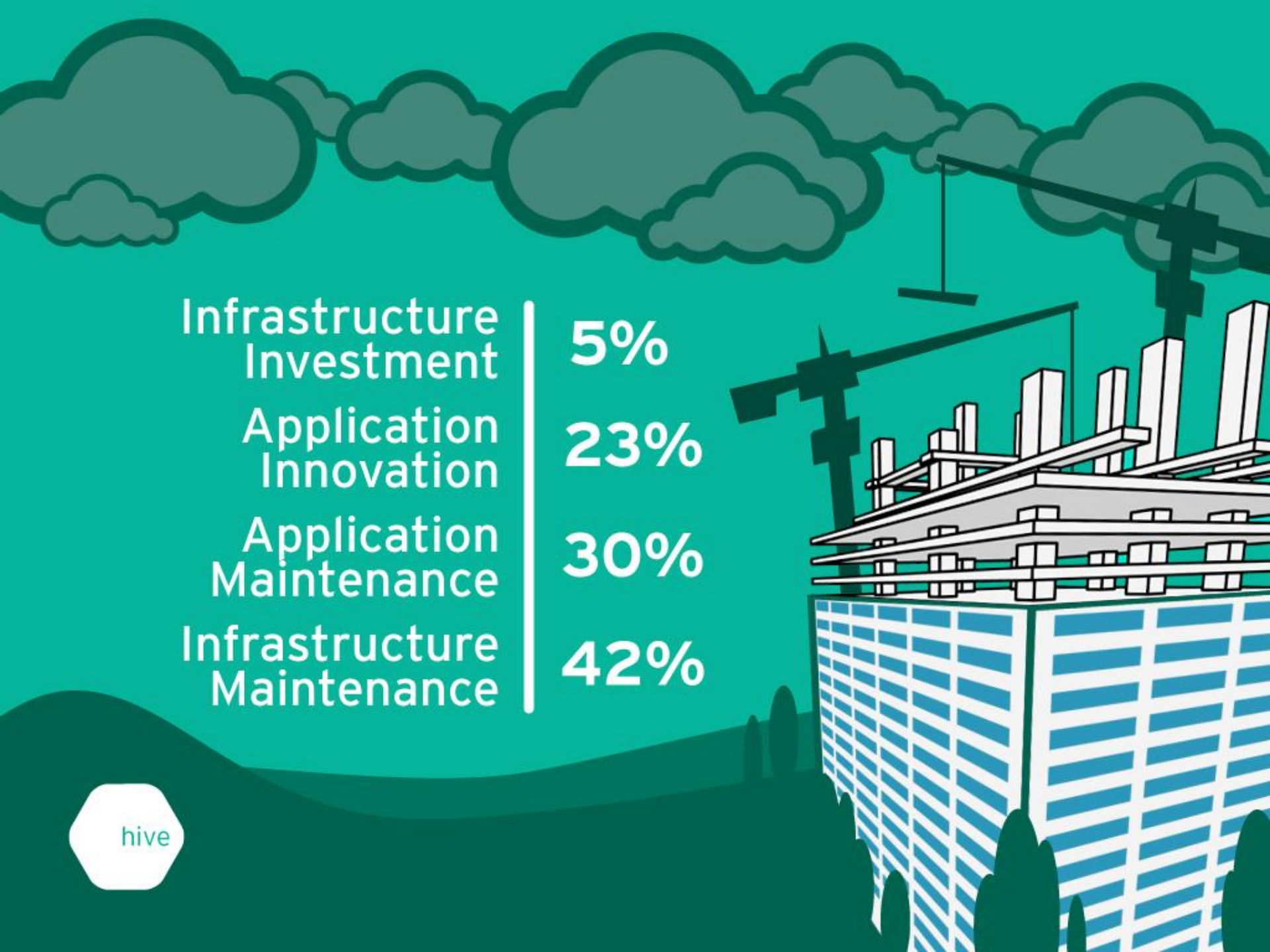
hive

Budgets

...where do
they go?



hive



Infrastructure Investment	5%
Application Innovation	23%
Application Maintenance	30%
Infrastructure Maintenance	42%

The background features a stylized landscape with several dark teal, rounded mountain peaks. At the top, there are several grey, rounded clouds with dark teal outlines. In the center, a tall, white skyscraper with a grid of windows is positioned on a small hill. The overall color palette is dominated by various shades of teal and grey.

x86 and Unstructured Data
responsible for largest costs...
...yet is invisible

The logo consists of a white, rounded hexagonal shape with a dark teal border. Inside the hexagon, the word "hive" is written in a dark teal, lowercase, sans-serif font.

hive

The background is a solid teal color. It features several white, stylized clouds of various sizes and shapes, some with black outlines. At the bottom, there are dark teal, rounded hills. The text is centered in the upper half of the image.

Cloud Computing

...what exactly is it?

The logo consists of a white, rounded hexagonal shape with the word "hive" written inside in a dark teal, lowercase, sans-serif font.

hive



Cloud Computing

...what's the appeal?

hive

A stylized landscape with rolling hills and mountains in shades of teal and green. The sky is a darker teal with a few white clouds. The text is centered over this background.

Cloud computing has
been defined as

**"everything that we
currently do"**

and that it will have
no effect except to

**"change the wording
on some of our ads"**

Larry Ellison, Oracle

"RISKS"



The background is a vibrant teal color. At the top, there are stylized, dark teal clouds. Inside and around these clouds are several gears of various sizes and colors, including light teal, white, and grey. The gears are arranged in a way that suggests a complex mechanical system or a network. The overall aesthetic is clean, modern, and tech-oriented.

Practical Experiences

The logo consists of a white, rounded hexagonal shape with the word "hive" written inside in a lowercase, teal, sans-serif font.

hive



**Where does this
leave us?**

hive

A stylized illustration of a brick tower with a hole near the top. A yellow rope is attached to the hole and extends downwards. The background is a teal sky with grey clouds and a dark teal ground. The text "Once upon a time, ...not so long ago" is written in a white, cursive font on the left side of the image.

*Once upon a time,
...not so long ago*

A white hexagonal logo with the word "hive" written inside in a dark teal, lowercase, sans-serif font.

hive



Designed by **hand**
Built by **craftsmen**
Maintained by **feudalism**

hive

...the years past





Designed by **committee**
Built by **labourers**
Maintained with **effort**





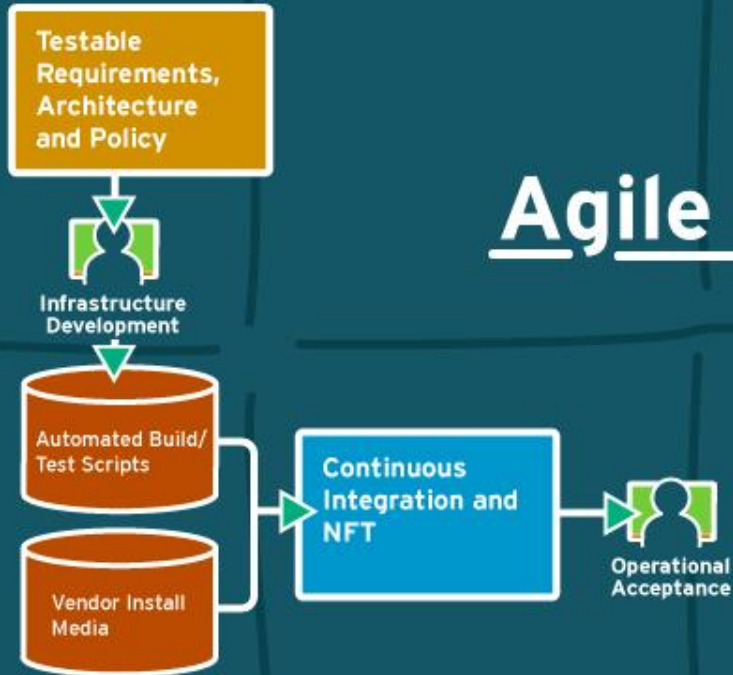
Designed by **architect** Built by **code**
Maintained **simply**



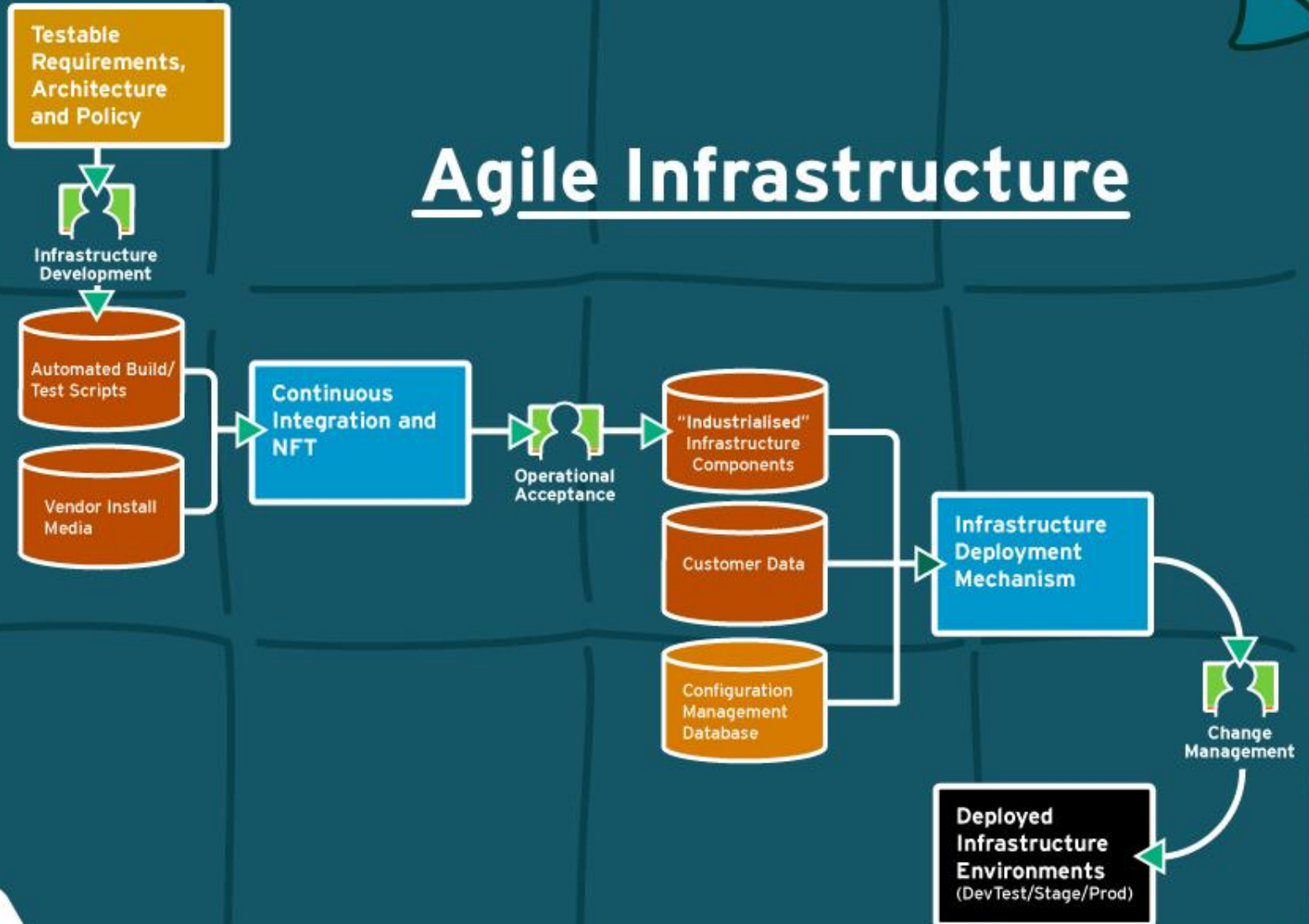
...happily ever after.



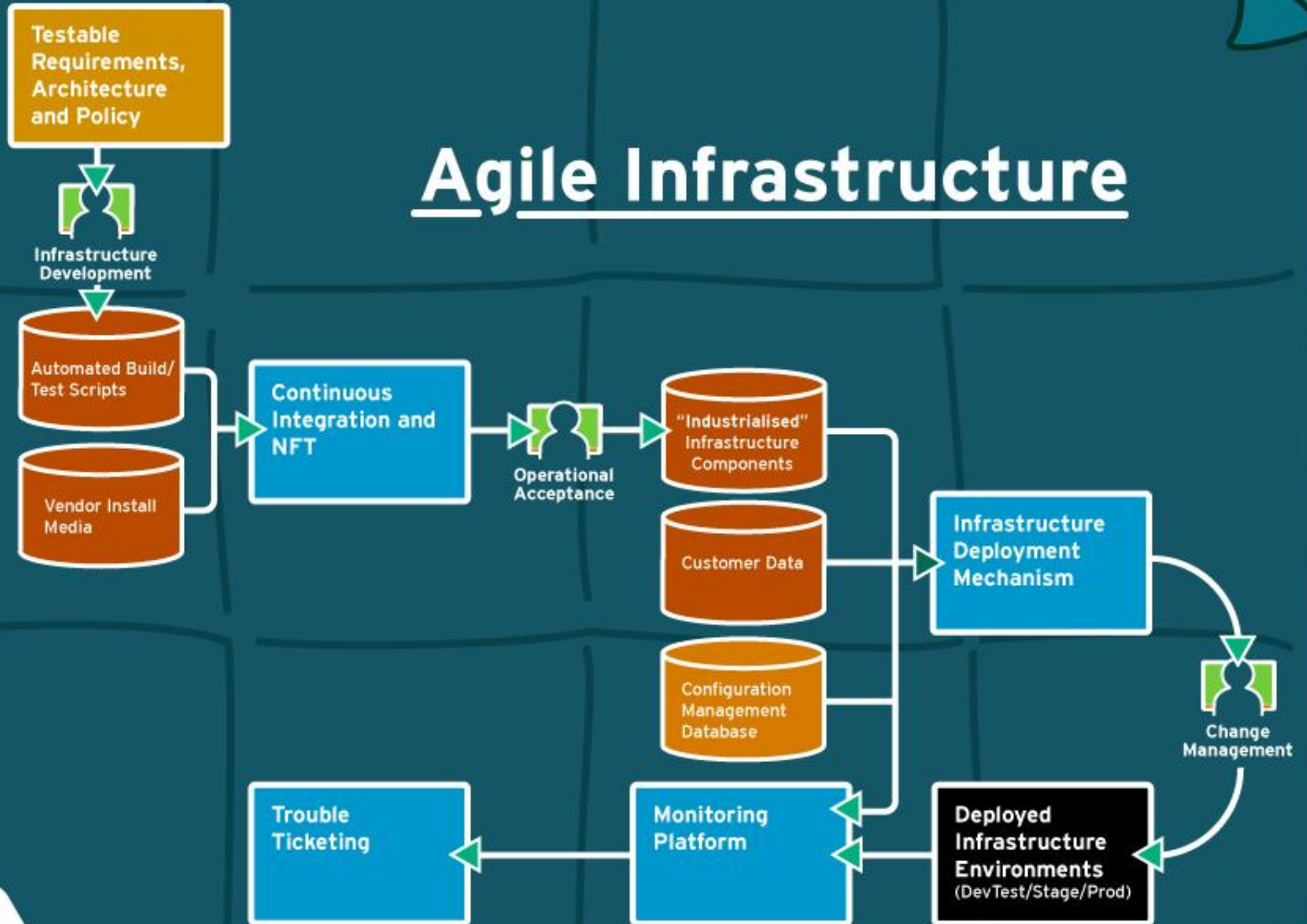
Agile Infrastructure



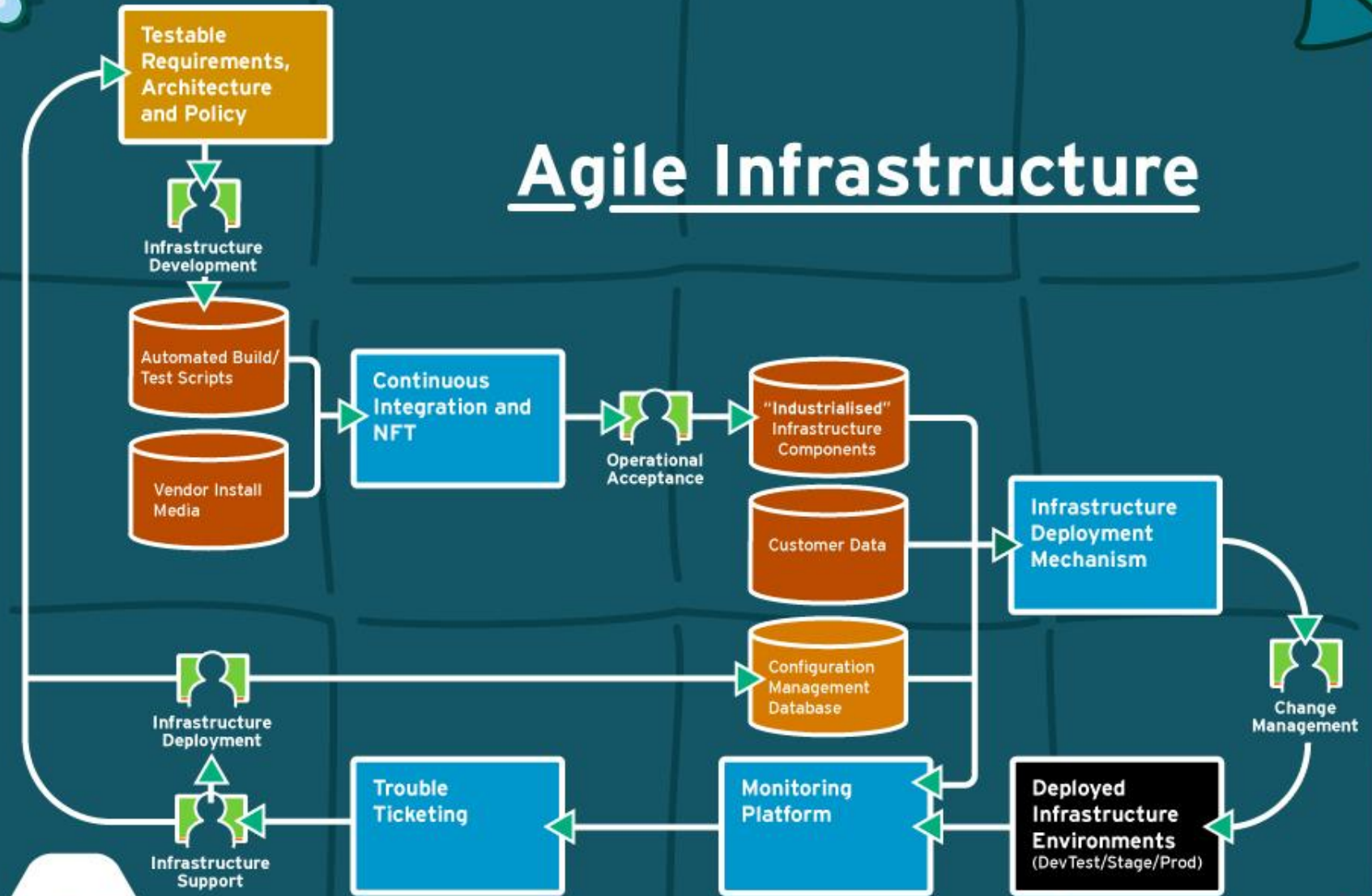
Agile Infrastructure



Agile Infrastructure



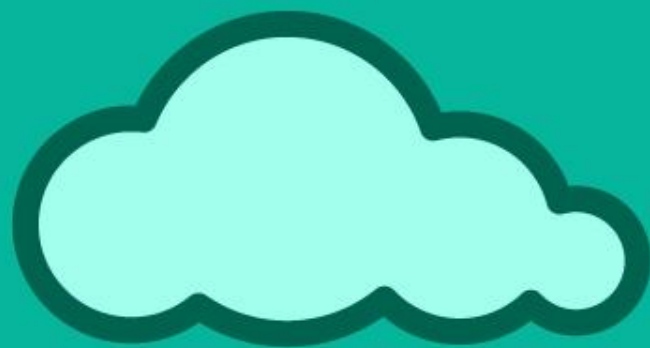
Agile Infrastructure





*Peace and harmony
...returned to the land*





A morality tale

All names, characters and incidents portrayed in this production are fictitious. No identification with any persons living or dead is intended or should be inferred.

hive

You have been watching...
alan benson & edmund j sutcliffe